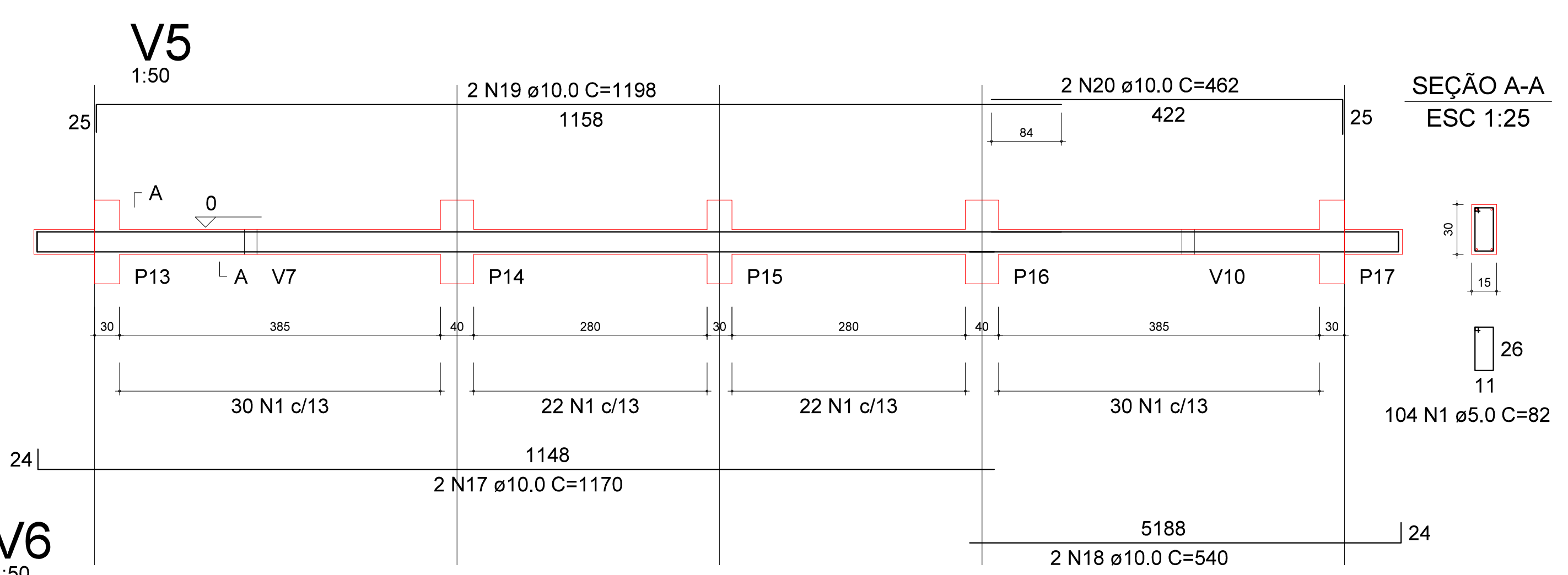


RELAÇÃO DO AÇO

AÇO	N	DIAM	Q	UNIT (cm)	C.TOTAL (cm)
60	1	5.0	540	82	44280
50	2	8.0	6	190	1140
	3	8.0	1	220	220
	4	8.0	2	1198	2396
	5	8.0	2	397	794
	6	8.0	4	370	1480
	7	8.0	4	742	2968
	8	8.0	4	317	1268
	9	8.0	2	608	1216
	10	8.0	2	608	1216
	11	10.0	2	1092	2184
	12	10.0	2	158	316
	13	10.0	2	357	714
	14	10.0	4	369	1476
	15	10.0	2	909	1818
	16	10.0	2	953	1906
	17	10.0	2	1100	2200
	18	10.0	2	470	940
	19	10.0	2	1198	2396
	20	10.0	2	462	924
	21	10.0	4	739	2956
	22	10.0	4	314	1256
	23	10.0	4	604	2416

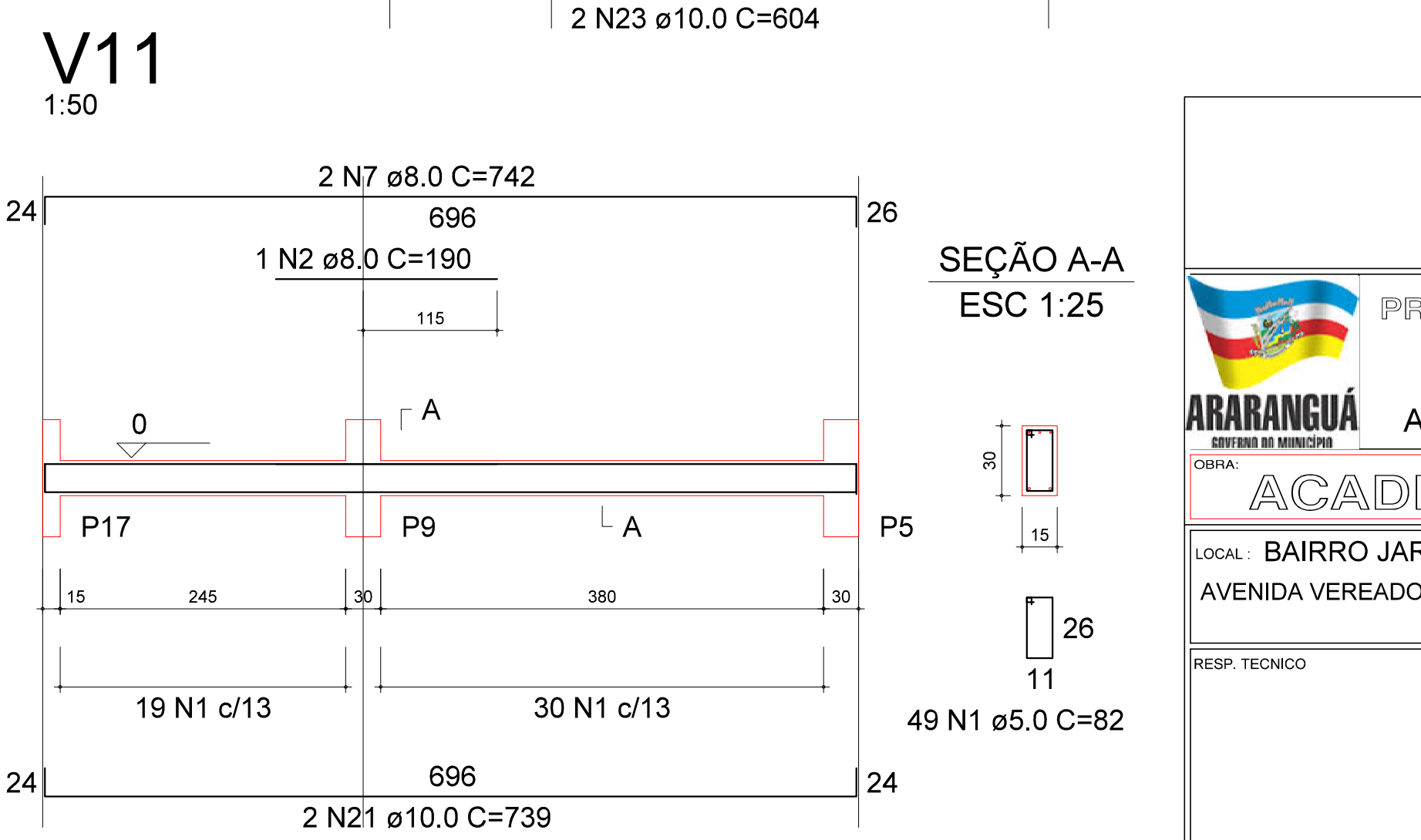
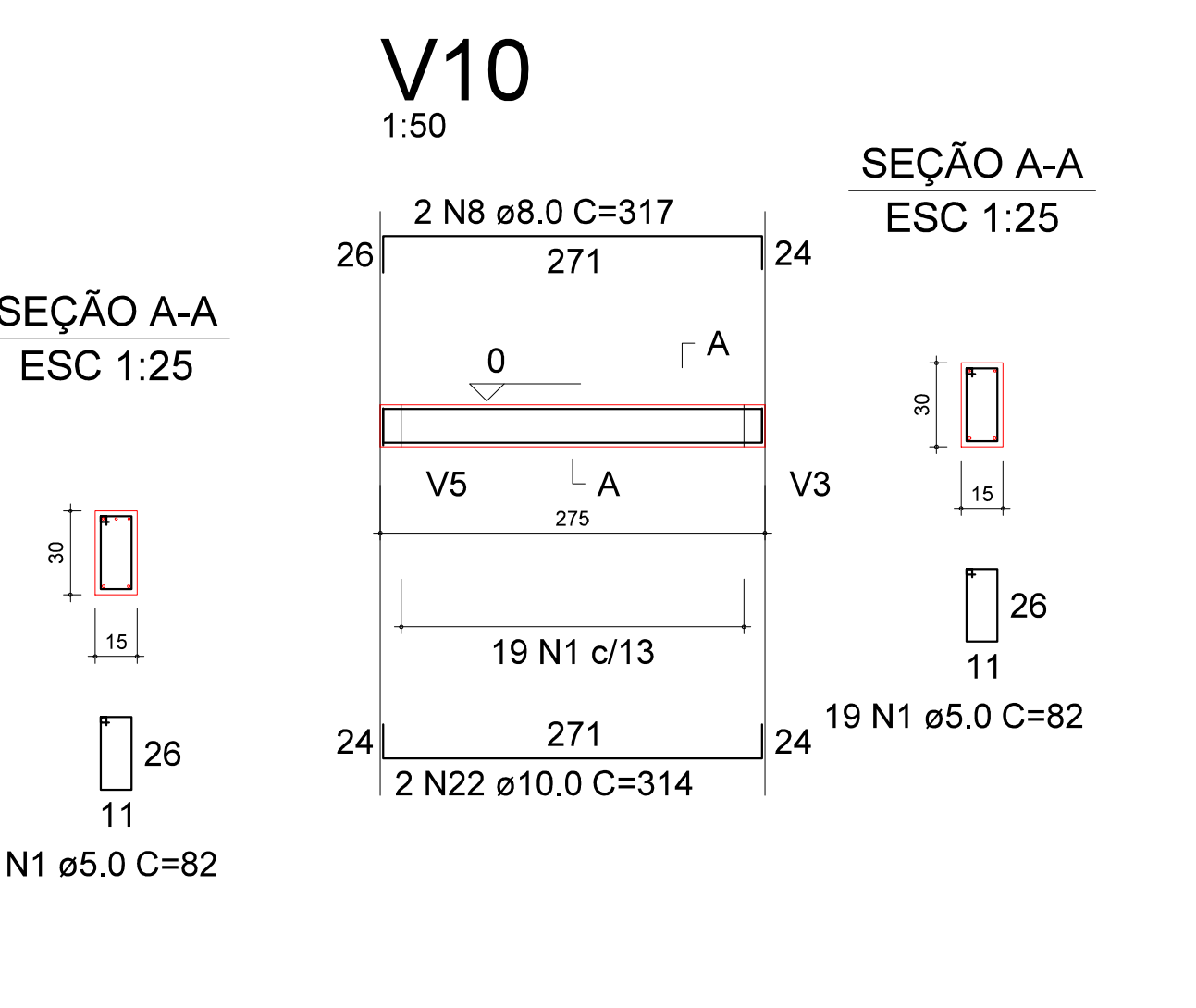
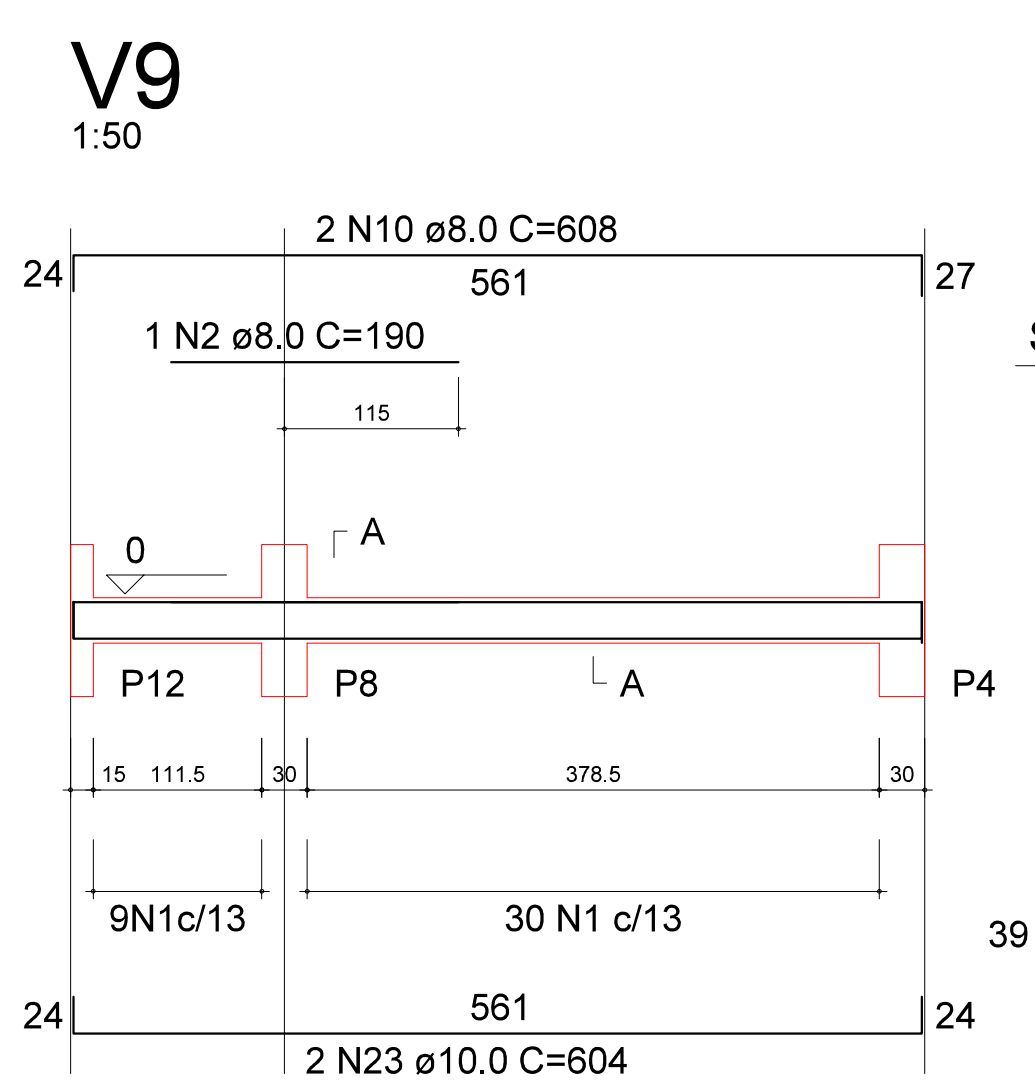
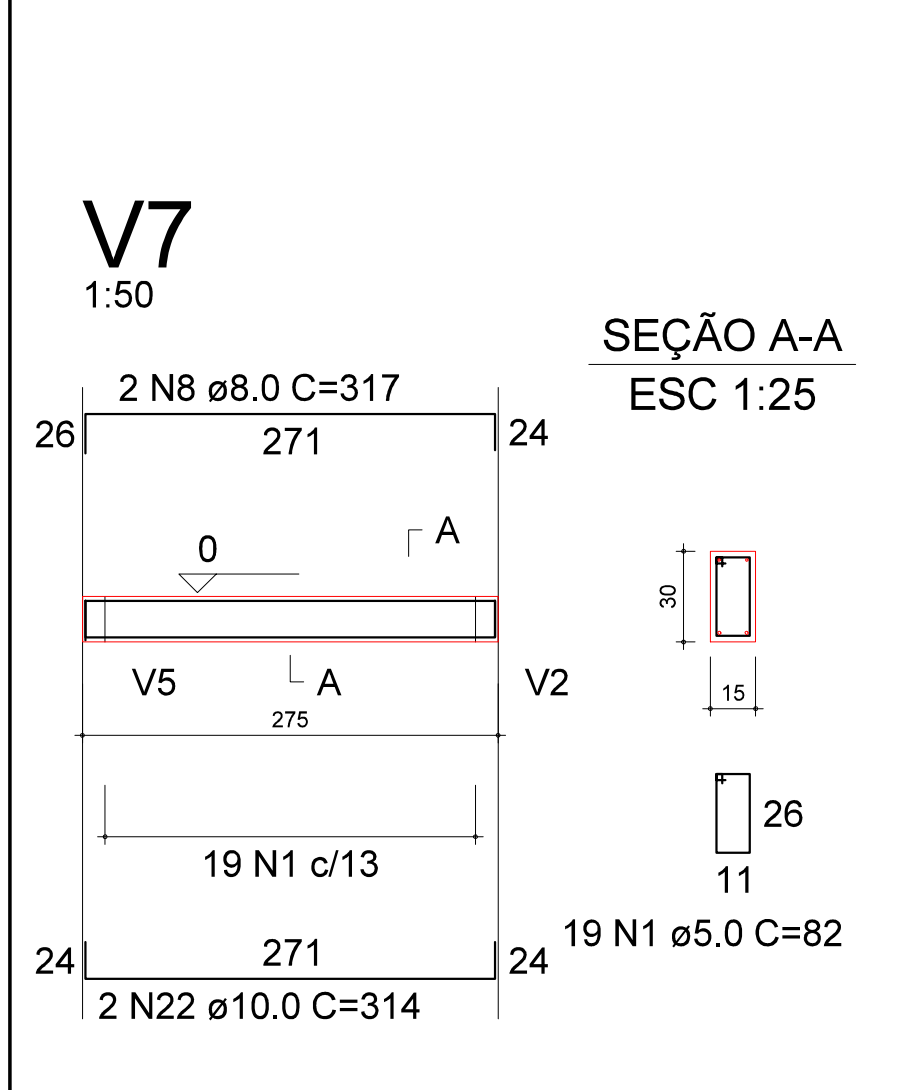
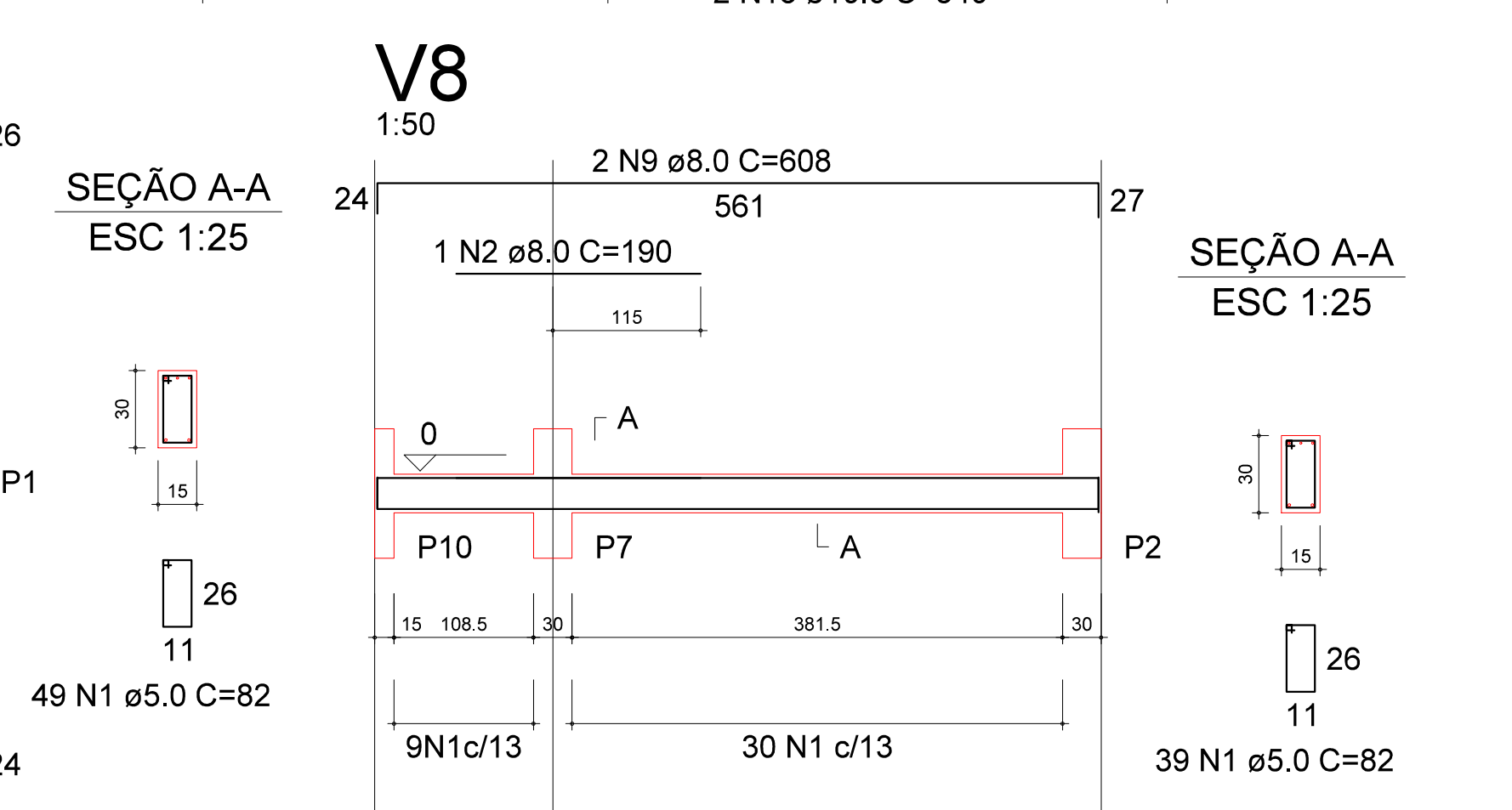
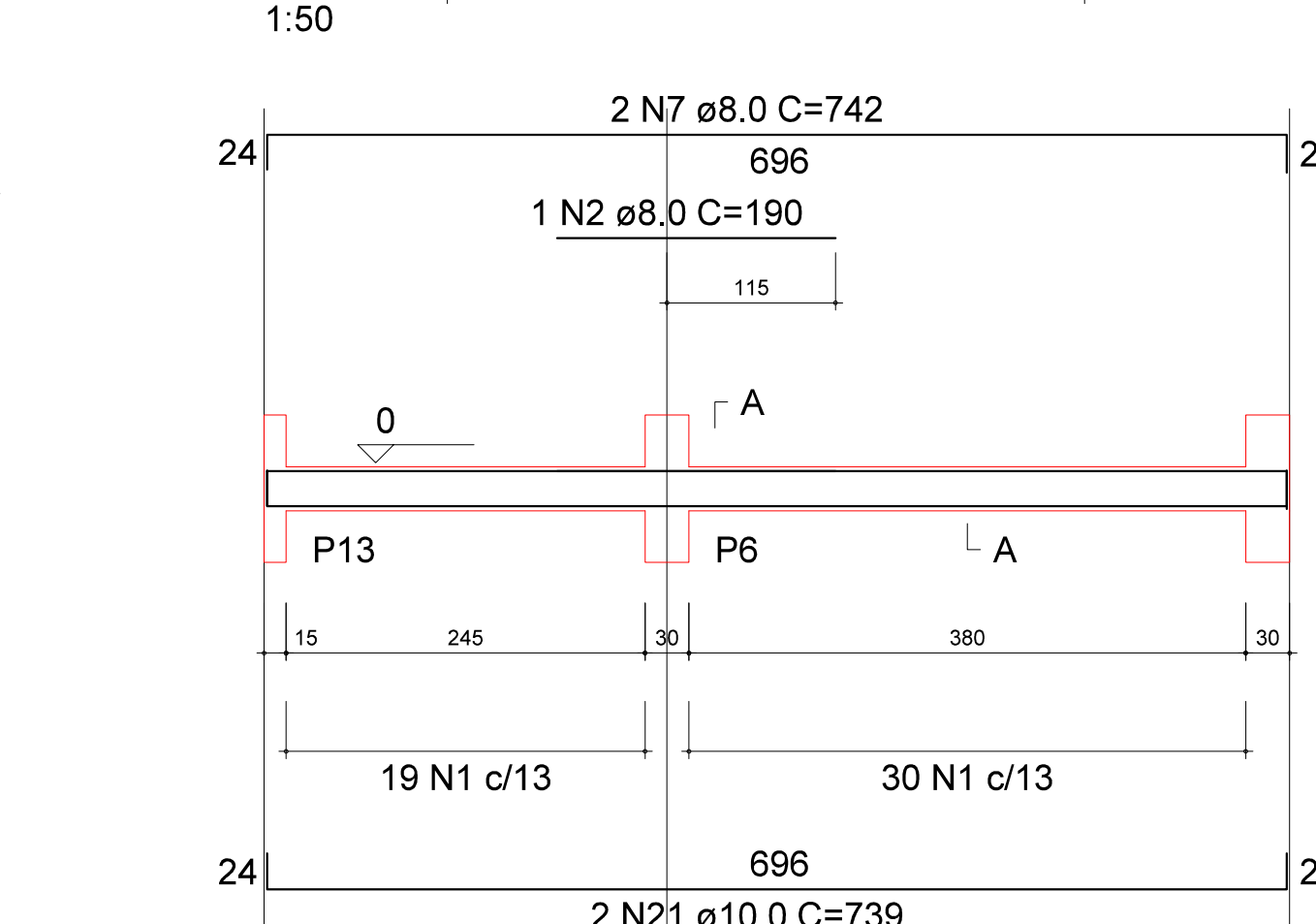
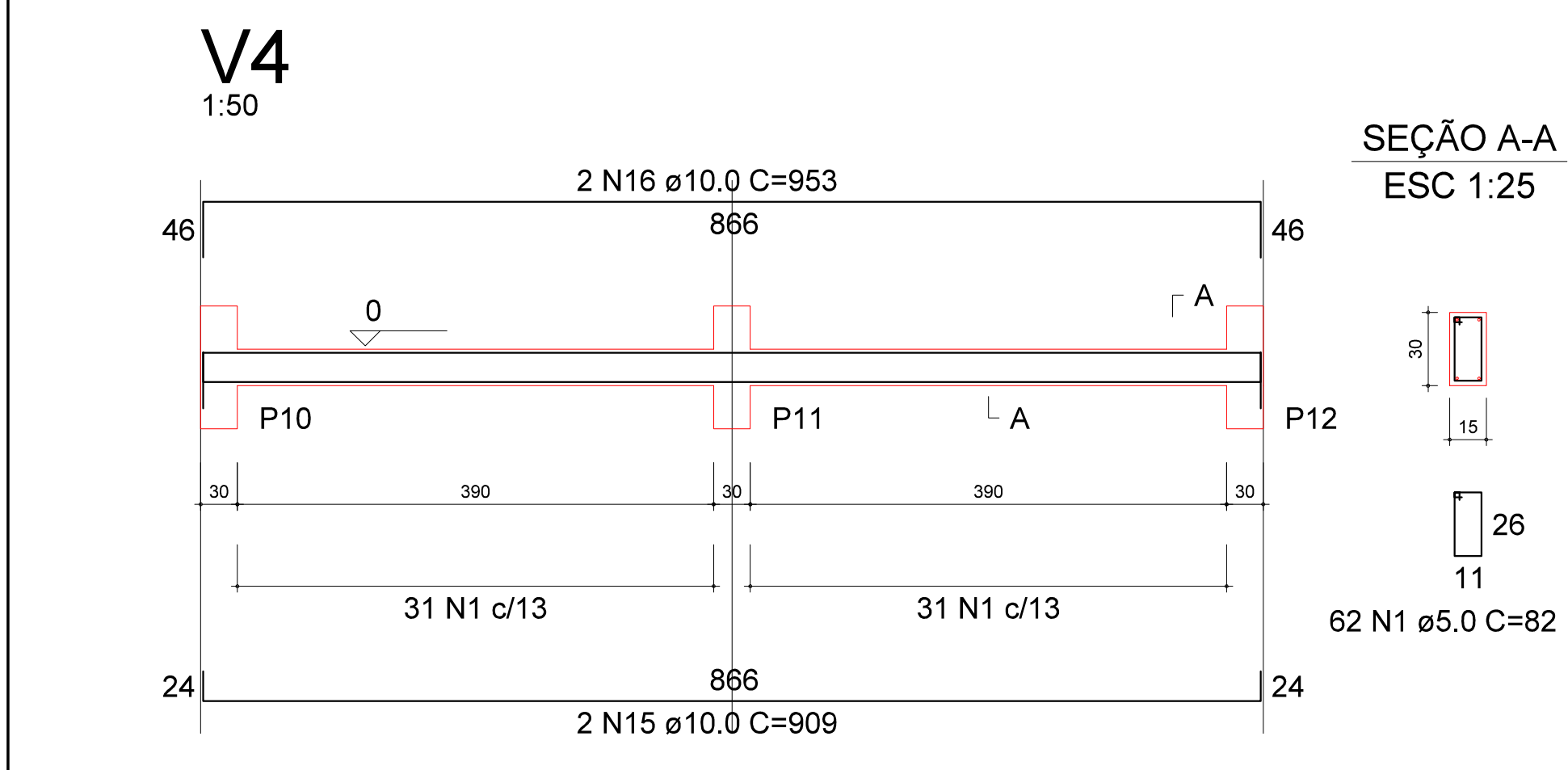


RESUMO DO AÇO

AÇO	DIAM	C.TOTAL (m)	PESO+10% (kg)
CA50	8.0	127.0	55.2
CA60	10.0	215.1	145.9
CA60	5.0	445.5	75.5

PESO TOTAL
CA50 201.1
CA60 75.5

Vol. concreto total = 3.42 m³
Área de forma total = 57.08 m²
fck = 200.00 kgf/cm²



PREFEITURA MUNICIPAL DE ARARANGUÁ - SC
SECRETARIA DE OBRAS, VIAÇÃO E SERVIÇOS URBANOS
RUA DR. VIRGILINO DE QUEL, 200 - CENTRO

ADM. SANDRO R. MACIEL / RODRIGO TURATTI

ACADEMIA COBERTA PROJETO ESTRUTURAL

LOCAL: BAIRRO JARDIM DAS AVENIDAS
AVENIDA VEREADOR MANOEL COSTA

FASE: 1

REVISADO: _____
EXTENSÃO: _____
ÁREA: _____
EXTENSÃO: _____

RESP. TÉCNICO: _____ ASSUNTO: VIGAS DO BALDRAME

LEVANTAMENTO: _____ PRANCHA: 2

DESENHO: ENG. CIVIL ALISON SILVA
PROJETO: ENG. ALISON SILVA

DATA: AGOSTO / 2013