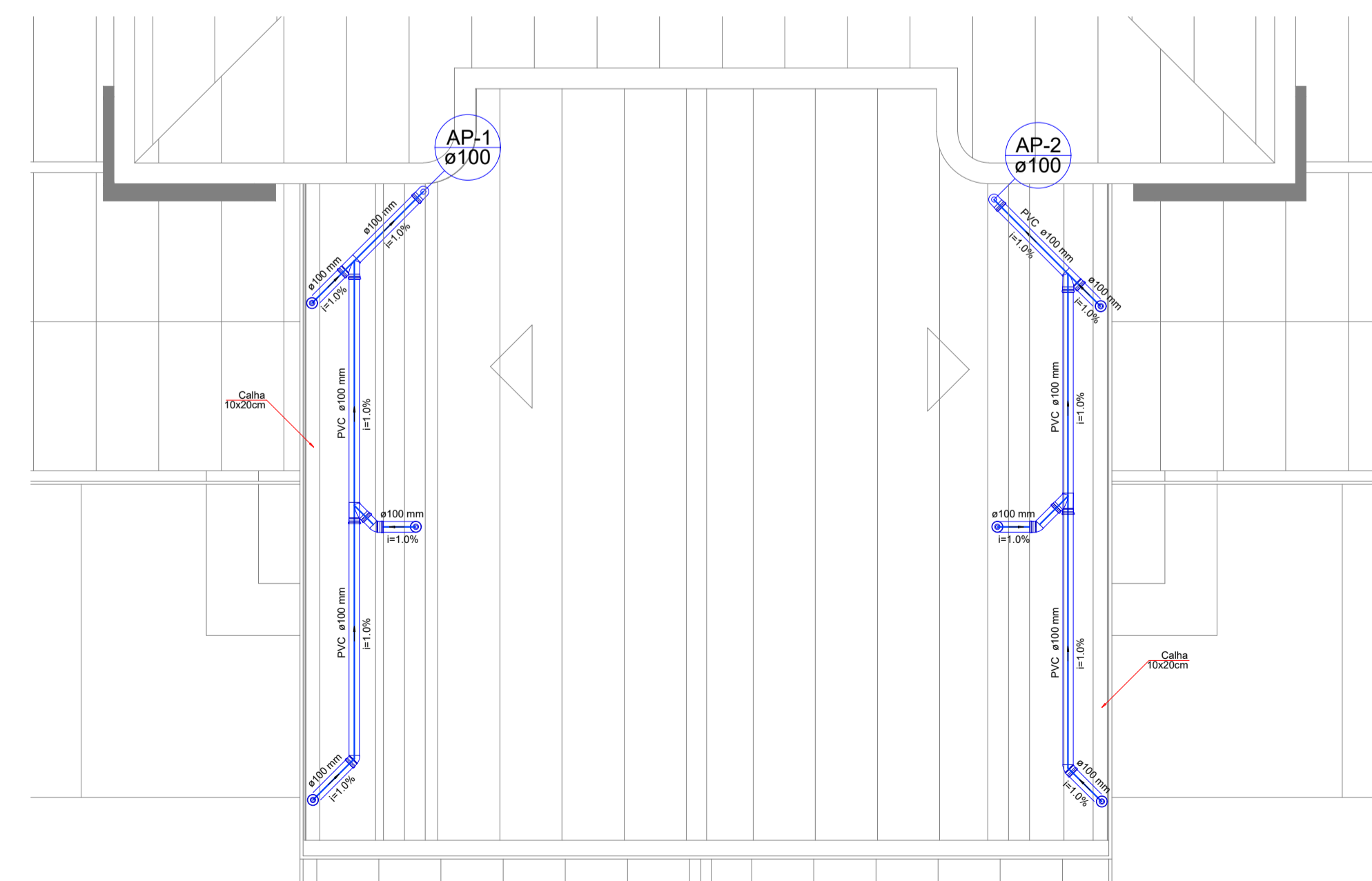
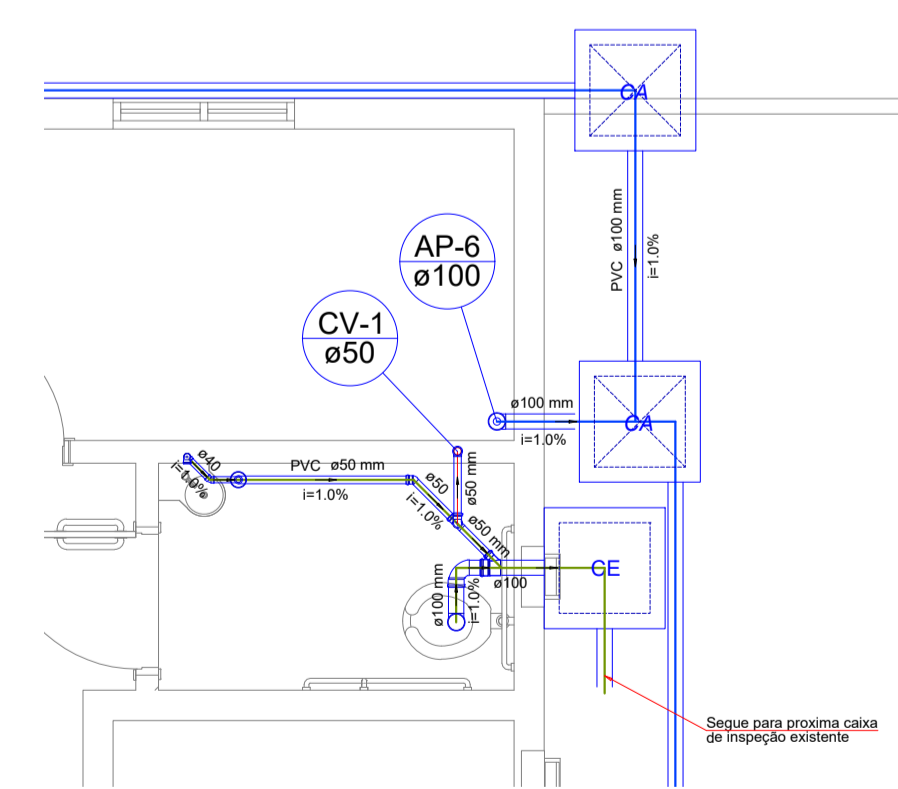


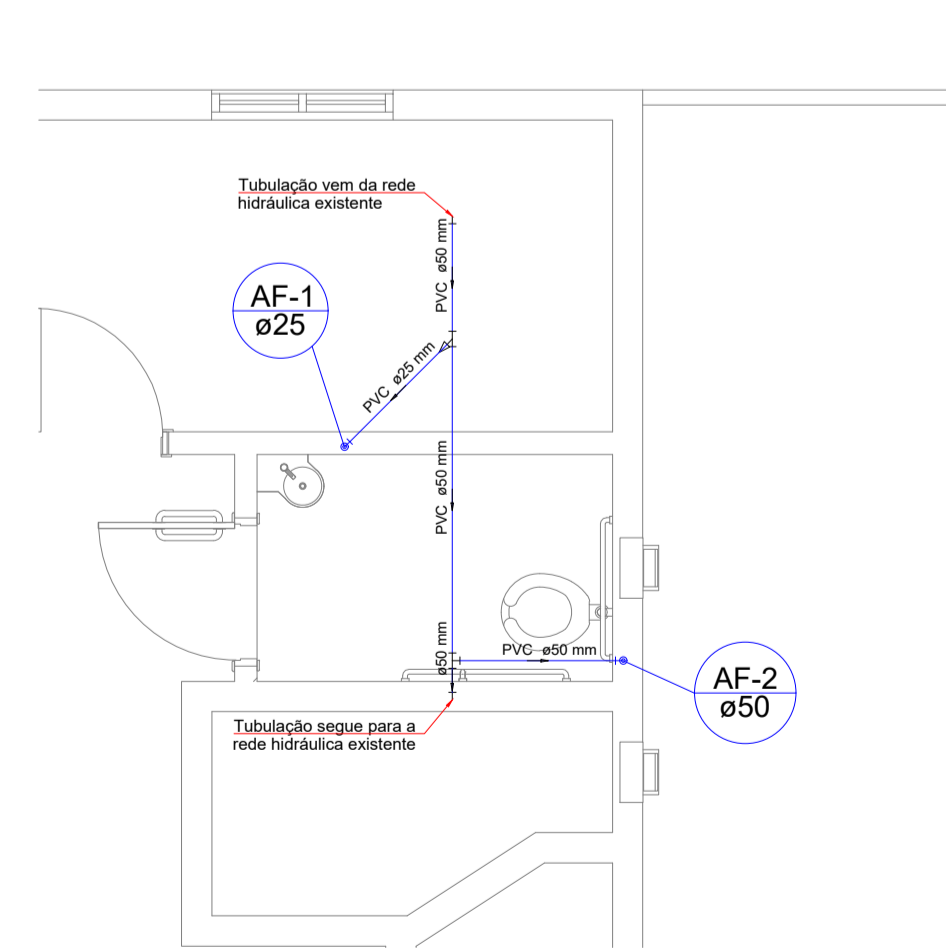
**Planta Sanitária e Pluvial- Térreo**  
Esc.: 1:100



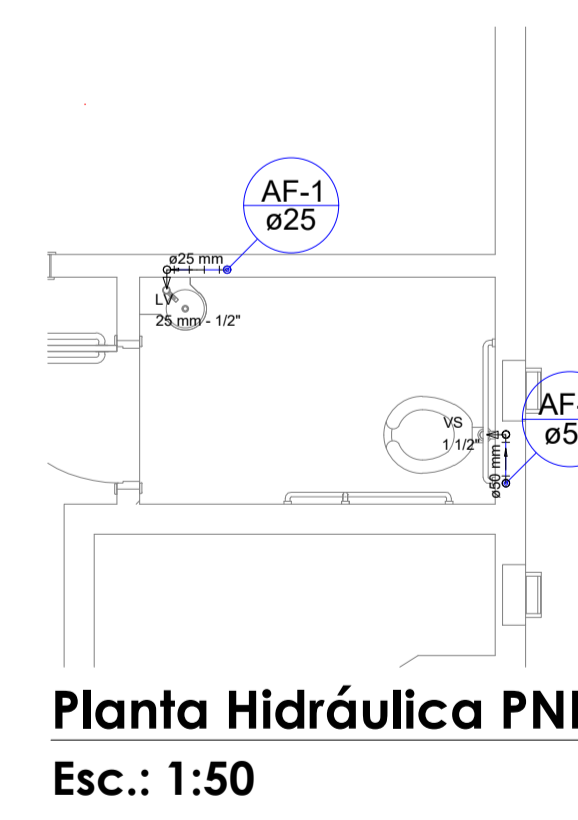
**Planta Pluvial - Cobertura**  
Esc.: 1:50



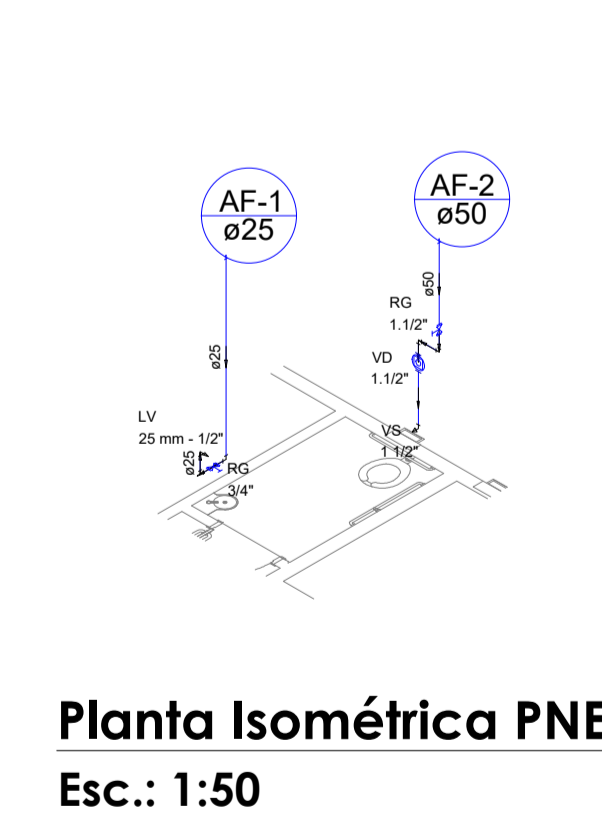
**Planta Sanitária PNE**  
Esc.: 1:50



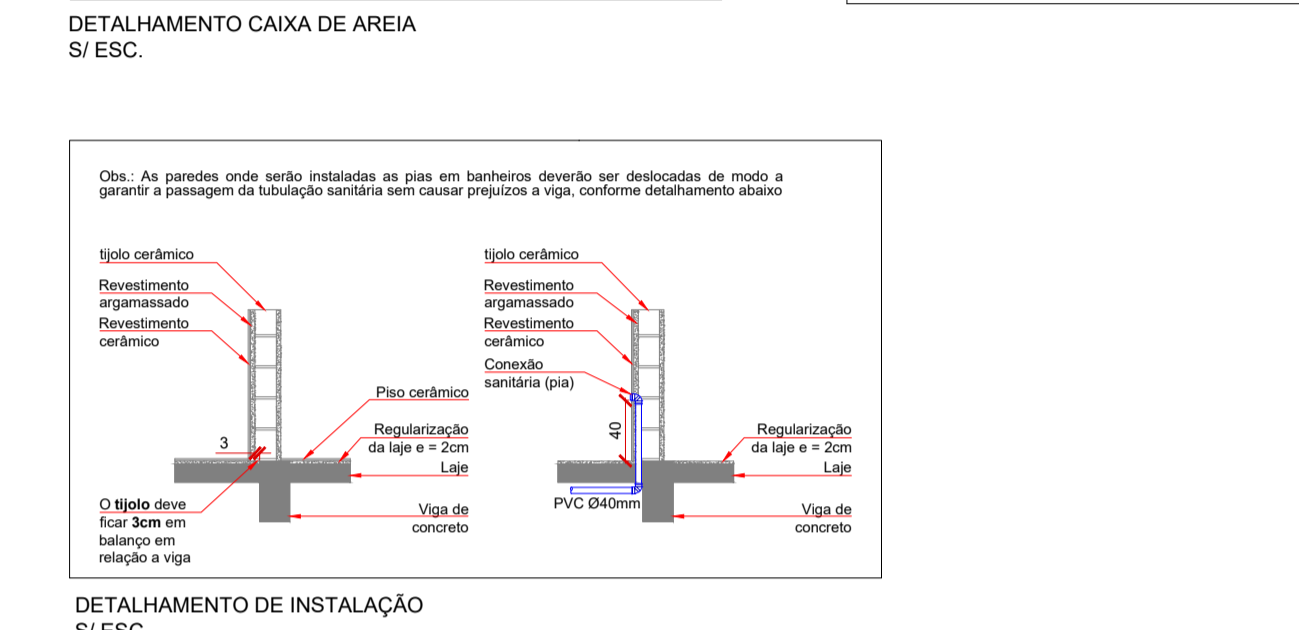
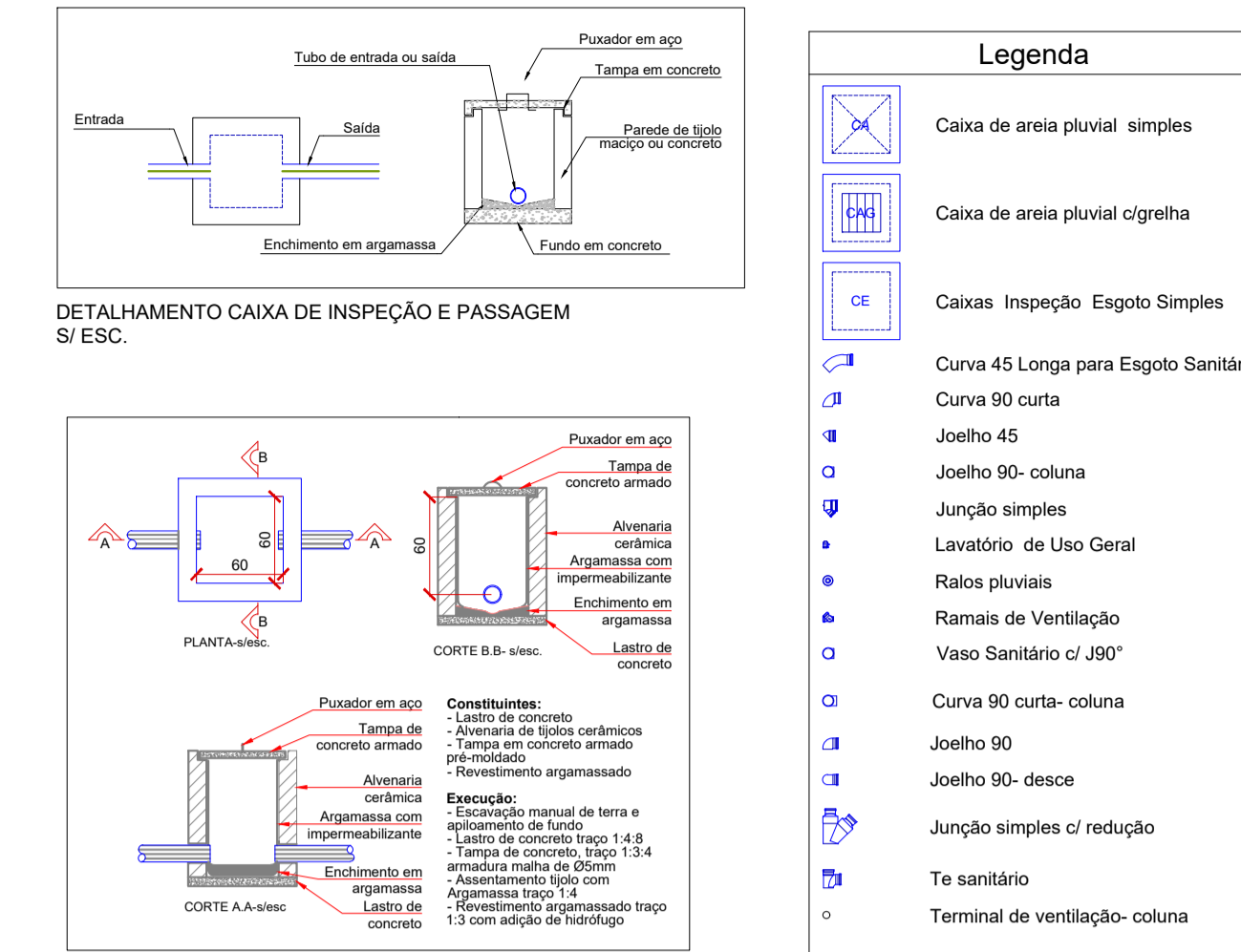
**Planta Hidráulica Cobertura**  
Esc.: 1:50



**Planta Hidráulica PNE**  
Esc.: 1:50



**Planta Isométrica PNE**  
Esc.: 1:50



**Aprovações**

--	--

**REALIZE**  
ARQUITETURA E ENGENHARIA

**Contato**  
48 35270090  
realize\_eng@hotmail.com  
realize\_arq@hotmail.com

**Responsável Técnico**  
Rafael Nuernberg  
CREA - SC 129.640-7  
Suellen M. Costa Palmas  
CAU - SC: A69267-0  
EMPRESA = CREA - SC 136340-7

Projeto Unidade de Saúde

Endereço: Rua Cel. Apolinário Pereira, 254 - Centro,  
Araranguá - SC, 88900-053

Projeto Hidrossanitário

Planta Sanitário e Pluvial-  
Térreo;  
Planta Pluvial - Cobertura;  
Planta Hidráulica  
Cobertura;  
Planta Hidráulica PNE;  
Planta Isométrica PNE;  
Detalhes;  
Legenda.

Realize Arquitetura e Engenharia  
CNPJ: 12.319.815/0001-17  
CREA-SC 136.340-4

Fundo Municipal de Saúde de  
Araranguá  
CPF Nº 056.970.759-52

**ÁREA**  
**2647,94m<sup>2</sup>**

Escala: Indicada      Data: 15/10/2021      Prancha: 1/2